

NEWMAR | 2019 DUTCH STAR



DUTCH STAR  
*diesel motor coach*

## THE REBIRTH *of* AN ICON

*The subject of an exhaustive transformation, the 2019 Dutch Star is well-appointed and brimming with cosmopolitan influence, from the polished porcelain tile and glass and marble backsplash, to full hardwood window treatments and pocket doors with reeded glass inserts. And for those looking to achieve a deeper, more luxe tone, Sable maple cabinetry with an available high-gloss finish exhibits a dynamic look that is equal parts rich and vibrant.*

SUPER-POLISHED COUNTERTOPS



*Your every wish, granted*



## THE BEST *made* BETTER

### FLOOR PLANS

*12 available at 37, 40, and 43 feet*

### HIGHLIGHTS & AMENITIES

*Freightliner® XCR or Spartan® K2\* tag axle chassis (\*40- and 43-foot floor plans only)*

*Cummins® diesel engine with 450 horsepower*

*Comfort Drive™ adaptable steering with Passive Steer\* technology (\*40- and 43-foot floor plans only)*

*Power-locking baggage doors, keyless entry system*

*Girard® G2000 power side awning with wind sensor, LED lighting*

*Velocity full-paint Masterpiece™ finish*

*Make yourself at home*



*Floor plan 4328 with Velocity décor*

## SO MANY WAYS *to* RELAX

*Set below a carved Feature Ceiling and above porcelain tile floors that extend into each and every slideout, the all-new Dutch Star offers more furniture arrangements than ever before. Take floor plan 4328, which presents a set of recliners that can sit opposite a jackknife or Fold-N-Tumble sofa. Two storage ottomans and a bunk sofa can also be had with select layouts. Either way, you're surrounded by a carved backlit fascia and wide double-pane windows.*

RECLINERS AND LAMPSTAND

AVAILABLE WI-FI ACCESS



*Porcelain plank tile flooring*

*Arrive and unwind*

## EMBRACE *the* STAR TREATMENT

*Wrapped in the same Ultrafabrics® surfaces found throughout the cabin, Dutch Star grants you power-adjustable captain's chairs, including a queen-sized passenger seat. Inches away, a modern cockpit houses a digital instrument panel and wireless charging pad, while Rand McNally® navigation and a 360-degree camera system are available to join a standard side and rearview display. In the living area, you will find either a retractable or overhead-mounted Sony® 4K TV with a Blu-ray player and Bose® soundbar.*



Treat yourself



## SATISFY *your* CRAVING

*Hungry to find your dream kitchen? Look no further than floor plan 4328, home of a unique angled galley that hosts a full-size pantry, countertop appliance garage, and a standard Hide-A-Leaf dinette or available desk/dinette combo, as shown. Every Dutch Star features hardwood cabinetry made in-house, along with a stainless steel double-bowl sink. Standard appliances include a Whirlpool® French-door refrigerator and a recessed gas cooktop that is upgradable to an induction version, in addition to an optional Fisher & Paykel® dishwasher.*



SABLE MAPLE HIGH-GLOSS HARDWOOD CABINETS

*Your comfort zone*



## TO *each* THEIR OWN

*Lavishly appointed and meticulously decorated, the Dutch Star master suite can host a king bed and an available Sleep Number® adjustable mattress, which enables you and yours to select separate comfort settings, while dual nightstands present each of you with extra storage. Select floor plan 4328 to have two shirt wardrobes accompany five hardwood dresser drawers accentuated with raised panels and black chrome handles.*

LED TV WITH BLU-RAY PLAYER



*Refreshingly graceful*

FORM FUSED  
*with* FUNCTION

*One of nine bath-and-a-half layouts offered for 2019, floor plan 4328 boasts a storage-packed half-bath equipped with a medicine cabinet and vessel sink. But the master space is where you will find the most indulgent amenities like a raised Cathedral Ceiling and an expansive rear wardrobe with room for an available Whirlpool® washer and dryer. Select floor plans host showers as large as 50"x34", with all sizes enhanced by maintenance-free walls and a fresh water conservation system.*





sculpted to stand out



## STYLING *with* SOUL

*Breathe new life into our best-selling model by crafting a diesel motor coach that is bold, modern, and distinct. That was our goal in creating the all-new 2019 Dutch Star, a leading-edge motorhome that raises the bar on its competition. Fresh styling cues include a seamless full-paint grille, angled headlights, and side-mounted LED clearance lights.*

LED TAILLIGHTS

Take the show on the road



## RIDE *upon* A STAR

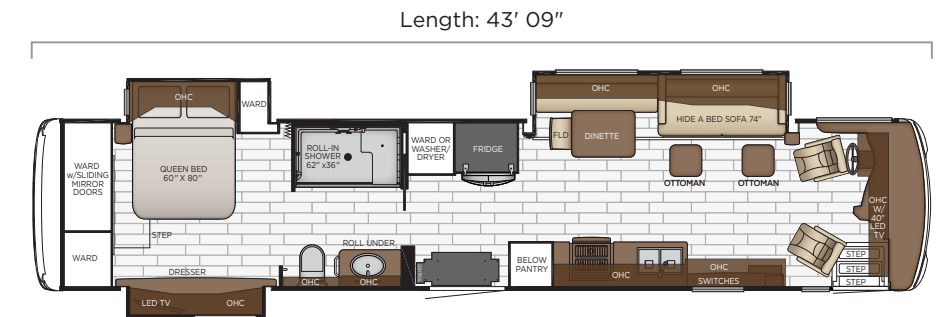
*The 2019 Dutch Star shines brighter than ever before, sporting a completely redesigned exterior capable of donning one of three all-new versions of our Masterpiece® paint finish. And while 40- and 43-foot floor plans are available with your choice of a Freightliner® chassis with V-Ride® or Spartan® chassis with Safe Haul,™ every Dutch Star is strengthened by our exclusive STAR Foundation. What's more, power for an optional exterior entertainment center and pullout freezer comes from a Cummins® Quiet Series diesel generator.*

Tailored to you



## ROAM *without* COMPROMISE

*With extras like an electric fireplace set below a retractable Sony® 4K TV, Ultrafabrics®-covered furniture, full-tile slideouts, and an available Fisher & Paykel® dishwasher, Dutch Star 4311 solidifies its position as the world's most luxurious fully accessible motor coach. What's more, a standard power-adjustable kitchen table can be positioned in front of bench seat or buffet dinette, while a roll-in shower, lowered switches and appliances, and widened aiseways all come standard.*

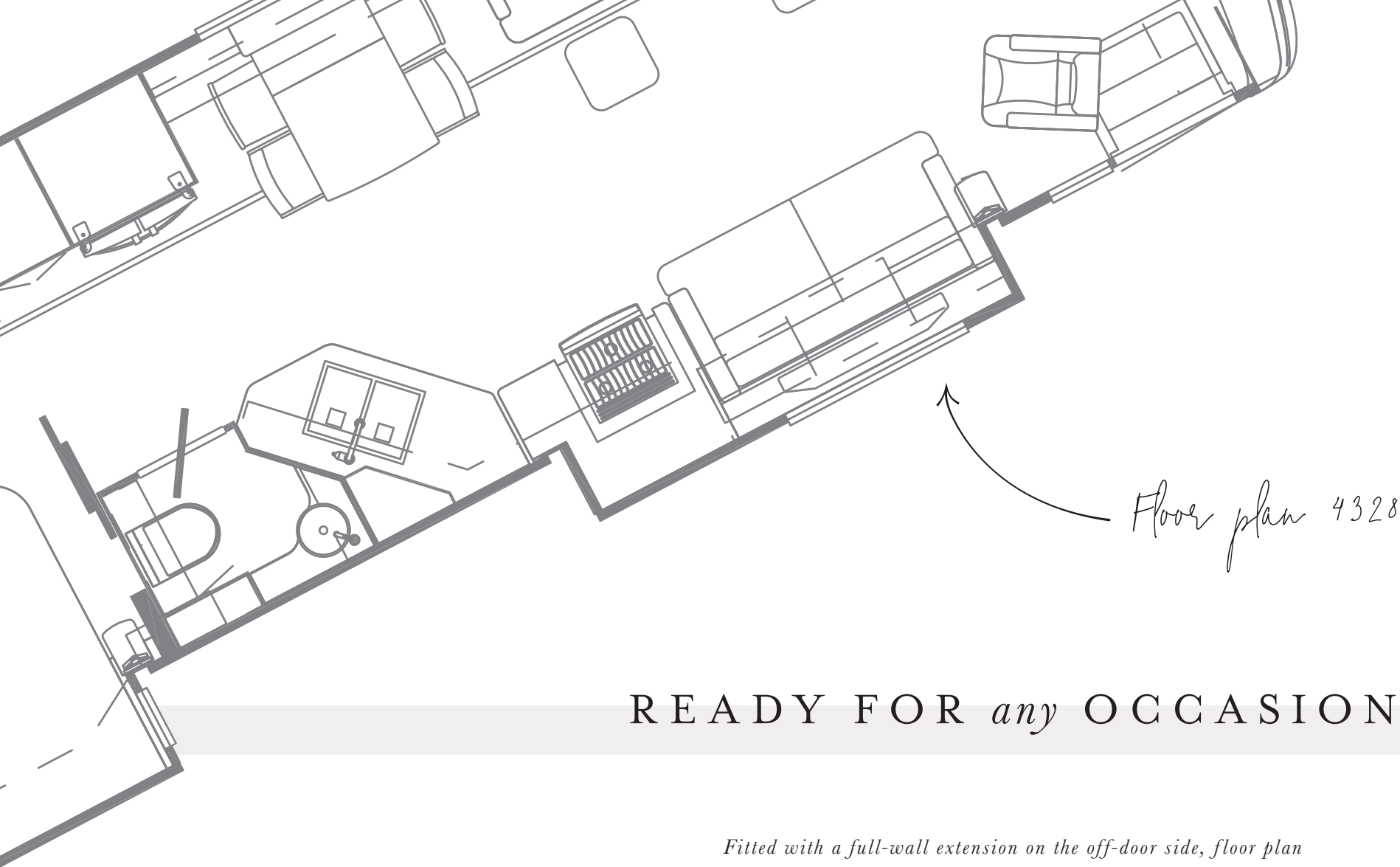


### 4311

Length	43'09"	Grey Tank	65 gal.
Width	101.5"	Sewage Tank	45 gal.
App. Overall Height	13'00"	Water Tank	105 gal.
Interior Width	95.5"	Propane Tank	22 gal.
Interior Height	83"	Furnace	50,000 btu

2015 Toffee décor shown

BRAUNABILITY® POWER LIFT



Floor plan 4328

## READY FOR *any* OCCASION

*Fitted with a full-wall extension on the off-door side, floor plan 4328 is a distinct yet practical layout with plentiful seating and a vast kitchen supplied with extra drawer and pantry storage. The master suite is positioned for privacy, with a reeded-glass pocket door separating the bedroom from the rest of the cabin. In the rear master bath, you will find a 40"x 32" glass-door shower and a full-wall rear wardrobe.*

## THE BEST *of* BOTH WORLDS

*Weaving together an elaborate modern design palette with the traditional look provided by handcrafted cabinetry and various hardwood accents, Velocity décor showcases both layered ikat motif and diamond trellis fabric textures. Fabrics mesh gold, alabaster, and graphite accents for a look that blends seamlessly with the rest of the cabin.*

Velocity décor →



# EXTERIOR *and* INTERIOR DÉCOR



**COBBLESTONE EXTERIOR**  
Awning Color: *Charcoal Tweed*



**COBBLESTONE INTERIOR**  
*a. Furniture/Fabric b. Flooring c. Counter Top*



**SEAPEARL INTERIOR**  
*a. Furniture/Fabric b. Flooring c. Counter Top*



**VELOCITY INTERIOR**  
*a. Furniture/Fabric b. Flooring c. Counter Top*



**SEAPEARL EXTERIOR**  
Awning Color: *Linen Tweed*

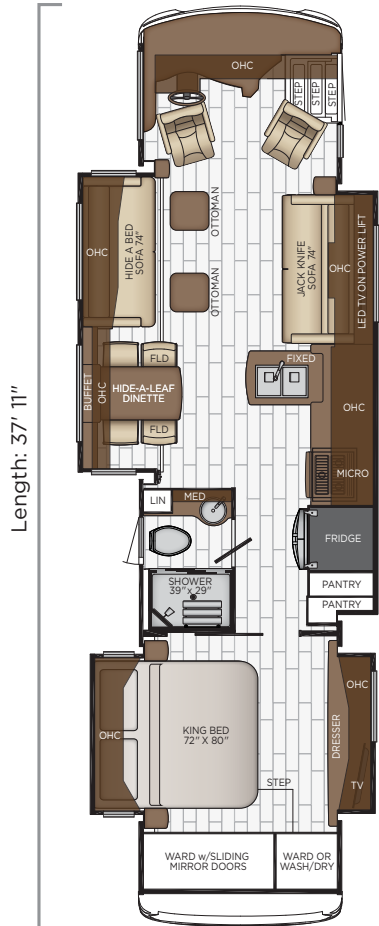


**VELOCITY EXTERIOR**  
Awning Color: *Charcoal Tweed*



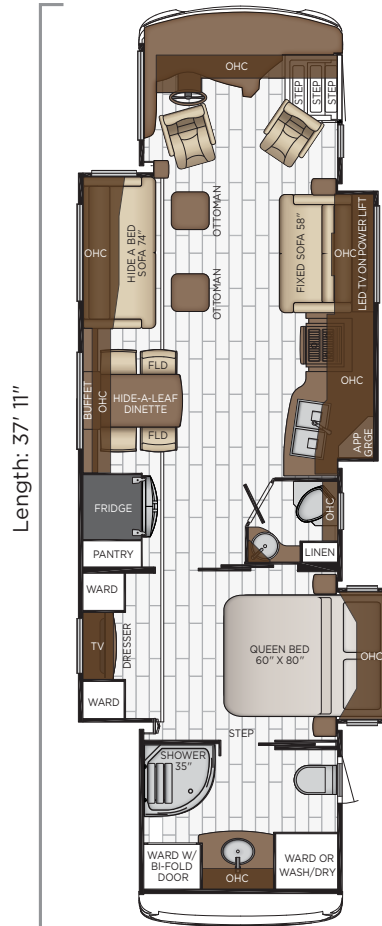
*\*Available in High Gloss or Matte Finish*

# DUTCH STAR



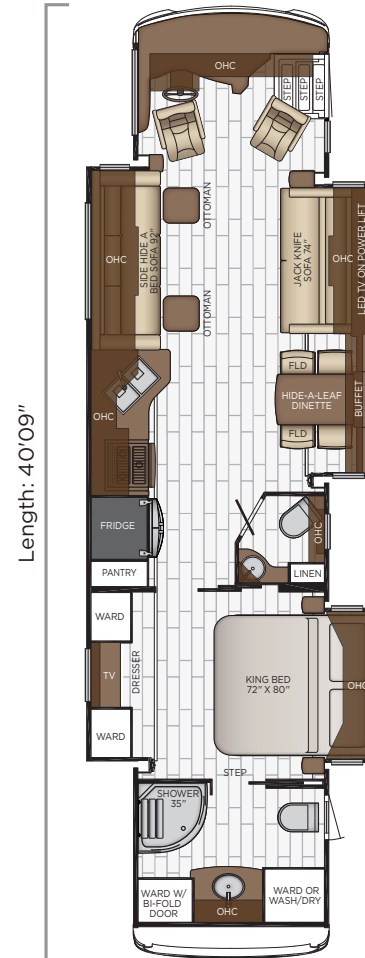
## 3717

Length	37'11"
Width	101.5"
App. Overall Height	12'10"
Interior Width	95.5"
Interior Height	83"
Grey Tank	65 gal.
Sewage Tank	45 gal.
Water Tank	105 gal.
Propane Tank	22 gal.
Furnace	50,000 btu



## 3736

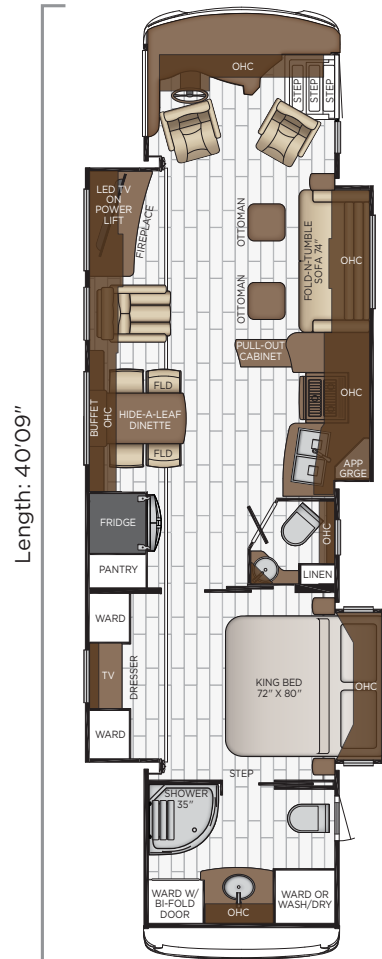
Length	37'11"
Width	101.5"
App. Overall Height	12'10"
Interior Width	95.5"
Interior Height	83"
Grey Tank	65 gal.
Sewage Tank	45 gal.
Water Tank	105 gal.
Propane Tank	22 gal.
Furnace	50,000 btu



## 4002

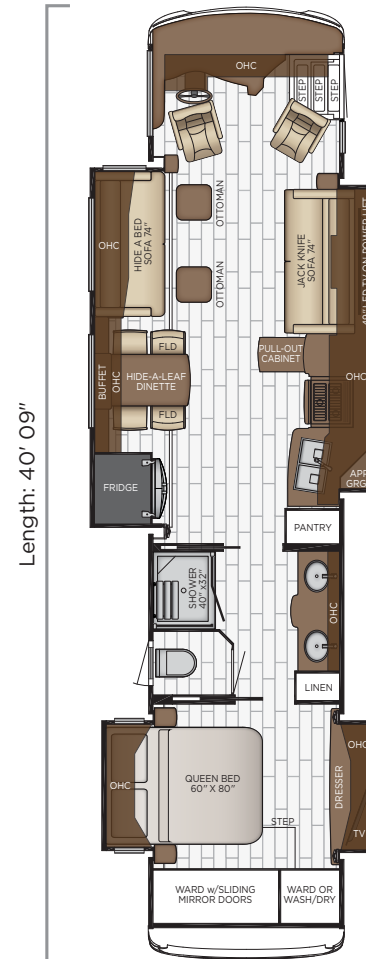
Length	40'09"
Width	101.5"
App. Overall Height	13'00"
Interior Width	95.5"
Interior Height	83"
Grey Tank	65 gal.
Sewage Tank	45 gal.
Water Tank	105 gal.
Propane Tank	22 gal.
Furnace	50,000 btu

# FLOOR PLANS



## 4018

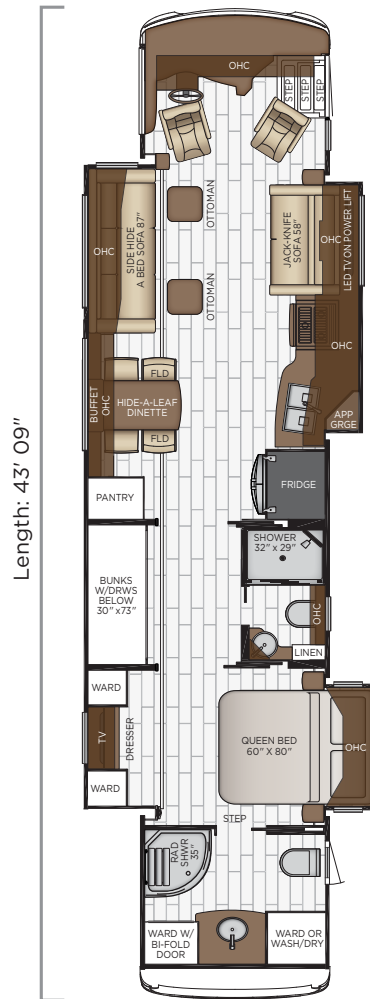
Length	40'09"
Width	101.5"
App. Overall Height	13'00"
Interior Width	95.5"
Interior Height	83"
Grey Tank	65 gal.
Sewage Tank	45 gal.
Water Tank	105 gal.
Propane Tank	22 gal.
Furnace	50,000 btu



## 4054

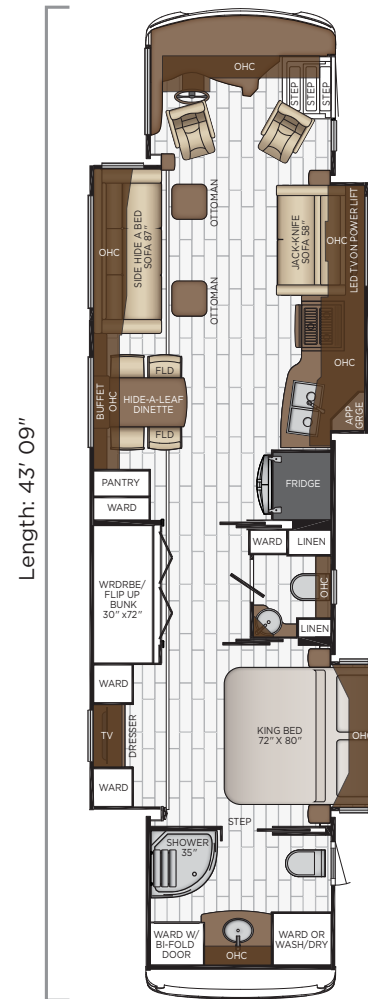
Length	40'09"
Width	101.5"
App. Overall Height	13'00"
Interior Width	95.5"
Interior Height	83"
Grey Tank	65 gal.
Sewage Tank	45 gal.
Water Tank	105 gal.
Propane Tank	22 gal.
Furnace	50,000 btu

# DUTCH STAR



## 4310

Length	43'09"
Width	101.5"
App. Overall Height	13'00"
Interior Width	95.5"
Interior Height	83"
Grey Tank	65 gal.
Sewage Tank	45 gal.
Water Tank	105 gal.
Propane Tank	22 gal.
Furnace	85,000 btu

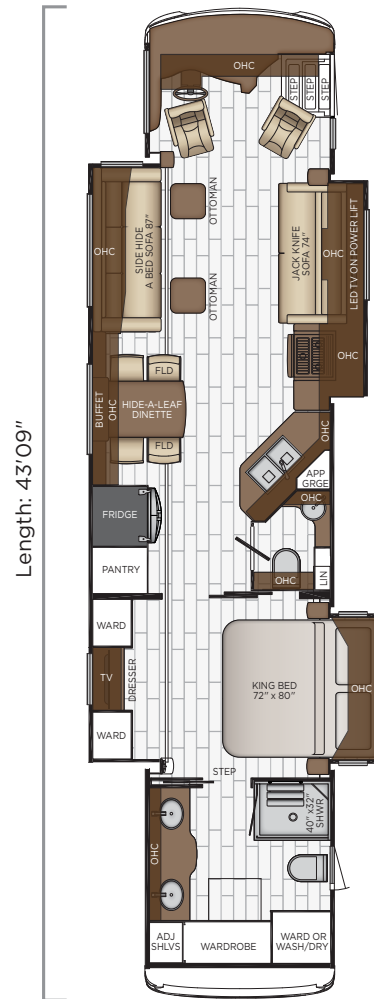


## 4326

Length	43'09"
Width	101.5"
App. Overall Height	13'00"
Interior Width	95.5"
Interior Height	83"
Grey Tank	65 gal.
Sewage Tank	45 gal.
Water Tank	105 gal.
Propane Tank	22 gal.
Furnace	50,000 btu



# FLOOR PLANS



## 4328

Length	43'09"
Width	101.5"
App. Overall Height	13'00"
Interior Width	95.5"
Interior Height	83"
Grey Tank	65 gal.
Sewage Tank	45 gal.
Water Tank	105 gal.
Propane Tank	22 gal.
Furnace	50,000 btu



## 4362

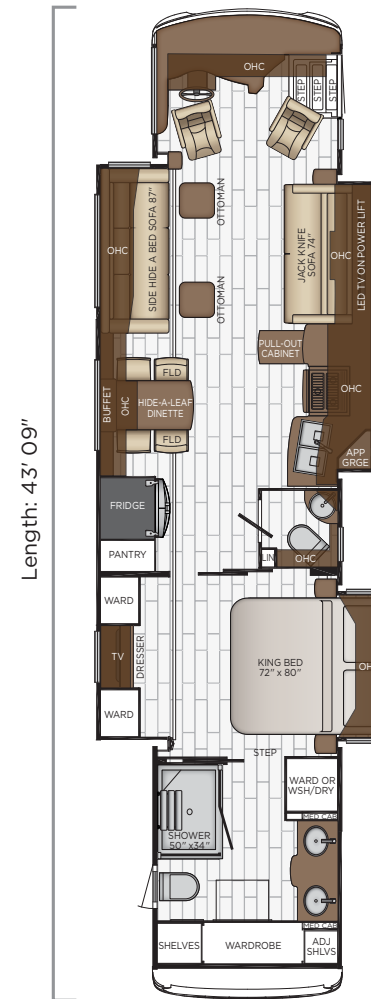
Length	43'09"
Width	101.5"
App. Overall Height	13'00"
Interior Width	95.5"
Interior Height	83"
Grey Tank	65 gal.
Sewage Tank	45 gal.
Water Tank	105 gal.
Propane Tank	22 gal.
Furnace	50,000 btu

# DUTCH STAR



## 4363

Length	43'09"
Width	101.5"
App. Overall Height	13'00"
Interior Width	95.5"
Interior Height	83"
Grey Tank	65 gal.
Sewage Tank	45 gal.
Water Tank	105 gal.
Propane Tank	22 gal.
Furnace	50,000 btu



## 4369

Length	43'09"
Width	101.5"
App. Overall Height	13'00"
Interior Width	95.5"
Interior Height	83"
Grey Tank	65 gal.
Sewage Tank	45 gal.
Water Tank	105 gal.
Propane Tank	22 gal.
Furnace	50,000 btu



# QUALITY YOU CAN FEEL

Like a fine home, the 2019 Dutch Star is framed 16 inches on center, and is covered by a fiberglass roof with walkable decking and an integrated gutter rail.

## BASEMENT

Cargo Liner  
 3/8" Floor Decking  
 1 1/4" Bead Foam  
 Galvanized Sheeting (Prevents Distortion)



## FREIGHTLINER

FLOOR PLAN	ENGINE HP	AXLE RATIO	FUEL CAP.	WHEEL BASE	FRONT GAWR	REAR GAWR	TAG GAWR	GVWR	GCWR	APP. UVW	APP. NCC
3717	450	4.78	100 gal.	242	15200 lbs.	24000 lbs.	n/a	39200 lbs.	49200 lbs.	34000 lbs.	5200 lbs.
3736	450	4.78	100 gal.	242	15200 lbs.	24000 lbs.	n/a	39200 lbs.	49200 lbs.	34500 lbs.	4700 lbs.
4002	450	4.78	100 gal.	252+TAG	17000 lbs.	20000 lbs.	12000 lbs.	49000 lbs.	64000 lbs.	38100 lbs.	10900 lbs.
4018	450	4.78	100 gal.	252+TAG	17000 lbs.	20000 lbs.	12000 lbs.	49000 lbs.	64000 lbs.	37800 lbs.	11200 lbs.
4054	450	4.78	100 gal.	252+TAG	17000 lbs.	20000 lbs.	12000 lbs.	49000 lbs.	64000 lbs.	36400 lbs.	12600 lbs.
4310	450	4.78	150 gal.	288+TAG	19000 lbs.	20000 lbs.	12000 lbs.	51000 lbs.	66000 lbs.	40600 lbs.	10400 lbs.
4311	450	4.78	150 gal.	288+TAG	19000 lbs.	20000 lbs.	12000 lbs.	51000 lbs.	66000 lbs.	38500 lbs.	12500 lbs.
4326	450	4.78	150 gal.	288+TAG	19000 lbs.	20000 lbs.	12000 lbs.	51000 lbs.	66000 lbs.	40700 lbs.	10300 lbs.
4328	450	4.78	150 gal.	288+TAG	19000 lbs.	20000 lbs.	12000 lbs.	51000 lbs.	66000 lbs.	40600 lbs.	10400 lbs.
4362	450	4.78	150 gal.	288+TAG	19000 lbs.	20000 lbs.	12000 lbs.	51000 lbs.	66000 lbs.	40300 lbs.	10700 lbs.
4363	450	4.78	150 gal.	288+TAG	19000 lbs.	20000 lbs.	12000 lbs.	51000 lbs.	66000 lbs.	40700 lbs.	10300 lbs.
4369	450	4.78	150 gal.	288+TAG	19000 lbs.	20000 lbs.	12000 lbs.	51000 lbs.	66000 lbs.	40700 lbs.	10300 lbs.

## SPARTAN

FLOOR PLAN	ENGINE HP	AXLE RATIO	FUEL CAP.	WHEEL BASE	FRONT GAWR	REAR GAWR	TAG GAWR	GVWR	GCWR	APP. UVW	APP. NCC
4002	450	4.78	100 gal.	252+TAG	17000 lbs.	20000 lbs.	12000 lbs.	49000 lbs.	64000 lbs.	37700 lbs.	11300 lbs.
4018	450	4.78	100 gal.	252+TAG	17000 lbs.	20000 lbs.	12000 lbs.	49000 lbs.	64000 lbs.	37700 lbs.	11300 lbs.
4054	450	4.78	100 gal.	252+TAG	17000 lbs.	20000 lbs.	12000 lbs.	49000 lbs.	64000 lbs.	36800 lbs.	12200 lbs.
4310	450	4.78	150 gal.	288+TAG	19000 lbs.	20000 lbs.	12000 lbs.	51000 lbs.	66000 lbs.	40800 lbs.	10200 lbs.
4311	450	4.78	150 gal.	288+TAG	19000 lbs.	20000 lbs.	12000 lbs.	51000 lbs.	66000 lbs.	38600 lbs.	12400 lbs.
4326	450	4.78	150 gal.	288+TAG	19000 lbs.	20000 lbs.	12000 lbs.	51000 lbs.	66000 lbs.	40600 lbs.	10400 lbs.
4328	450	4.78	150 gal.	288+TAG	19000 lbs.	20000 lbs.	12000 lbs.	51000 lbs.	66000 lbs.	40500 lbs.	10500 lbs.
4362	450	4.78	150 gal.	288+TAG	19000 lbs.	20000 lbs.	12000 lbs.	51000 lbs.	66000 lbs.	40400 lbs.	10600 lbs.
4363	450	4.78	150 gal.	288+TAG	19000 lbs.	20000 lbs.	12000 lbs.	51000 lbs.	66000 lbs.	40600 lbs.	10400 lbs.
4369	450	4.78	150 gal.	288+TAG	19000 lbs.	20000 lbs.	12000 lbs.	51000 lbs.	66000 lbs.	40600 lbs.	10400 lbs.

The content in our literature depicts and describes products that are subject to change. For the most recent images and information, please visit [NewmarCorp.com](http://NewmarCorp.com).

Lengths, heights, widths and dry weights are approximate. Weight will vary based on optional equipment added to the above base weight.

**GAWR:** Gross Axle Weight Rating is the maximum permissible weight for an axle.

**GVWR:** Gross Vehicle Weight Rating is the maximum permissible weight for a fully loaded motor coach.

**GCWR:** Gross Combination Weight Rating is the value specified by the manufacturer of the vehicle as the maximum allowable loaded weight of this motor coach and any towed trailer or towed vehicle.

**UVW:** Unloaded Vehicle Weight is the weight of this motor coach as built at the factory with full fuel, engine oil and coolants. Does not include cargo, fresh water, propane gas or dealer-installed accessories.

**NCC:** Net Carrying Capacity is the maximum weight of all occupants, including the driver, personal belongings, food, fresh water, waste water, propane gas, tools, tongue weight of towed vehicle, dealer-installed accessories, etc., that can be carried by the motor coach.

**Specifications supplied by the chassis manufacturer.**

**Dutch Star R-Values:**

Roof R-Value = 24

Sidewall R-Value = 11

Floor R-Value = 16

Basement R-Value = 4

# FEATURES *and* OPTIONS



## EXTERIOR



### EXTERIOR FEATURES

Full-Paint Masterpiece Finish™ with Clearcoat Finish and Diamond Shield Protection on Front Cap

Convex Chrome Exterior Mirrors with Defrost, Remote Control & Turn Signal Indicators

Chrome Power Baggage Door Locks, Keyless Entrance Door with Touch Pad & Doorbell

Entrance Door with Automatic Step

Rear Hitch for Towing Car

Assist Handle at Entrance Door

Mud Flaps

Rear Protective Tow Guard with Stainless Steel Newmar Name Cutout

Undercoating

Hydraulic Leveling Jacks

Stainless Steel Kick Panel at Entrance Door

Hammock Backer

Storage Bins in Pegboard Compartment

Wheelchair Lift\*

### OPTIONS

Patio Hammock Package

Large Storage Tray with Access from One Side

Pass Through Storage Tray with Access from Either Side

Baggage Door Stainless Steel Trim Kit

Flagpole Bracket

### CONSTRUCTION FEATURES

Fiberglass Roof with Walkable Decking and Integrated Gutter Rail

Gelcoated Fiberglass Exterior Sidewalls, Front and Rear Caps

Aluminum-Frame Sidewalls & Roof Construction, 16" on Center

5/8" Foam Insulation Laminated in Sidewalls & Ceiling

Polar Pak R19 Batten Insulation on Roof

Automatic Mechanical Lock Arms on Non-Hydraulic Slide-out Rooms - Paddle Style

### WINDOWS, AWNINGS & VENTS

Frameless Double-Pane Tinted Safety Glass Windows

Fan-Tastic® Vent with Rain Sensor in Kitchen and Bathroom

Hardwood Louvered Cover on Fan-Tastic® Vent in Kitchen

Skylight Above Shower\*

Girard G2000 Power Side Awning with Wind Sensor, Remote Control & LED Lights

Dometic Slideout Covers & Power Entrance Door Awning with LED Lights

One Piece Tinted Windshield



Egress Door with Ladder System

Driver Side Power Window

### OPTIONS

Additional Girard G2000 Side Awning on Door Side

Girard Package-Two Nova Side Awnings, Slideout Covers, Entrance Door & Power Window Awnings

Bunk Windows

Kitchen Window

Two Nova Side Awnings

Dometic 9000 Window Side Awning Package-1-Bedroom, 1-Off Door Side Living Room & 1-Door Side Living Room

## CHASSIS FEATURES

Freightliner XCR Chassis with 450Hp Cummins L9 Engine on 37' Floor Plan

Freightliner® V-Ride Drive Axle Suspension

Aluminum Wheels

Electronic Chassis Information Center in Dash

Cruise Control

Comfort Drive™ Steering with Power Column & Adjustable Control

Manual Tilt/Telescope Steering Wheel with VIP Smart Wheel

Recessed Fuel Fills with Crossover to Fill from Either Side

Back-Up Alarm

Anti-Lock Braking System

Chassis Battery Disconnect

### OPTIONS

Freightliner® Tag Axle 450Hp on 40'-43' Floor Plans

Spartan® K2 Tag Axle 450Hp on 40'-43' Floor Plans with 5 Year Warranty

## AIR CONDITIONING & HEATING

Two 13.5M Penguin™ Heat Pump Central Air Conditioners

Three 15M Penguin Heat Pump Air Conditioners, Energy Management System, and 10 kW Onan Generator on 43' Floor Plans

Hydronic Zone Diesel Heat with Continuous Hot Water

Dash Heater and Air Conditioner

Driver & Passenger Dash Overhead Ventilation System

Wall Mounted Sensors for Heating and Air Conditioning

Roof Air Conditioning Drainage System

### OPTIONS

Electric Radiant Heat Installed Below Main Floor Tile

Two 15M Penguin™ Heat Pump Air Conditioners

## ELECTRICAL FEATURES

8.0 kW Cummins Onan® Diesel Generator

10.0 kW Onan Generator on Slides 43'

Generator on Manual Slideout Tray

50 Amp Electrical Service with Flexible Cord with Automatic Transfer Switch

6-Volt House Batteries on Pullout Tray

Battery Disconnect Switch for House Battery

10 Watt Solar Panel to Charge Chassis Battery

2000 Watt Modified Sine Inverter

12 Volt Auxiliary Receptacle on Dashboard

Emergency Engine Start Switch

Engine Block Heater

Energy Management System

Exterior Security Lights

Mid-Ship Side Turn Signals

LED Lights Recessed in Ceiling and Underneath Overhead Cabinets

Accent Lights in Slideout Fascia Trim

LED Lights in Pantry

Lights in Exterior Storage Compartments, Controlled by an Interior Master Switch

LED Lights Installed Under Door Side Slideouts

Manually Operated Hold-To-Run Slideout Switch

Automatic Generator Start on Low Battery or Temperature Setting

Cable TV Connection

Interior Courtesy Lights

Lights in Wardrobe

Reading Lights at Head of Bed-Dimmable with Adjustable Aim

USB Charger at Dinette & Bedroom Nightstand

USB Outlet at Driver's Console for Driver Use

USB Outlet at Head of Each Bunk Area\*

Power Rewind Wheel with 50' Cord

KIB Backlight Switch Plates for Interior Lighting

KIB Switches for Interior Lights

Spare Fuses in the Chassis and House Fuse Panels

Wireless Phone Charger Pad in Driver & Passenger Area

### OPTIONS

Four Global Solar Flexible 100 Watt Solar Panels on Roof

Recessed Docking Lights

Solar Prep Rated with 6 Gauge Wire Run from Roof to House Battery Compartment

Transfer Switch with Surge Protector

## PLUMBING & BATH FEATURE

Demand Water System

Sewage Holding-Tank Rinse

Dometic® 321 China Bowl Stool or Macerator Stool\*

Sentrel Shower Walls with Glass Door\*

Fold Down Shower Seat

Water Filter for Entire Unit

Exterior Shower

Auto Fill Water Works Compartment

Power Water Hose Reel

Systems Monitor Panel

### OPTIONS

Assist Handle in Shower

Hot Water Line to Generator Area\*

RV Sanicon System

## INTERIOR FEATURES

Designer Feature Ceiling and Cathedral Ceiling with Added Height on Rear Bath Floor Plans\*

Tile Floor in Kitchen, Bathroom, Bedroom and Living Area

Interior Assist Handle at Main Entry Door

Quilted Bedspread with Accent Pillows

Decorative Wall Art

Hardwood Raised Panel Interior Passage Doors

Dash Panel Color Coordinated ABS

Power Stepwell Cover

MCD Power Shades

MCD Power Shades at Windshield and Manual Shades at Driver & Passenger Side Windows

Wastebasket in Kitchen Base Under Sink

### OPTIONS

Safe Located in Bedroom Wardrobe

MCD Power Window Shades with Remote Control

Shoe Storage Shelves Recessed into Rear Cap Wardrobe



**CABINETS & FURNITURE**

Bermuda Glazed Maple Hardwood Cabinets with Mitered Raised Panel Doors with Matte Finish

Concealed Hinges on Cabinet Doors

Lifts on Bed Top

Passenger Seat Work Station

Super-Polished Solid Surface Countertop in Bathroom and Bedroom

Super-Polished Solid Surface Countertop in Kitchen with Undermounted Stainless Steel Sink & Sink Covers

Pullout Pantry Shelves\*

Drawers with Full Extension Ball Bearing Guides

Flexsteel® Ultrafabrics® Leather Sofa, Driver and Queen Size Passenger Seats

Front Seats Six Way Power, Power Lumbar, Recliner and Footrest

Plush Pillow Top Mattress

Dinette with Power Adjusted Table, Bench Seat and a Folding Chair on Wheelchair Accessible Floor Plan

Extended Rotation Concealed Hinge for Washer/Dryer Cabinet Door

Appliance Garage in Kitchen\*

Mesh Cell Phone Holder at Each Bunk Bed\*

Two Ottomans\*

**OPTIONS**

Bermuda Glazed Maple Hardwood Cabinets with Mitered Raised Panel Doors-High Gloss

Carmel Glazed Cherry Cabinets with Mitered Raised Panel Doors-Matte Finish

Carmel Glazed Cherry Cabinets with Mitered Raised Panel Doors-High Gloss

Sable Maple Hardwood Cabinets with Mitered Raised Panel Doors-Matte Finish

Sable Maple Hardwood Cabinets with Mitered Raised Panel Doors-High Gloss

Wicker Glazed Maple Hardwood Cabinets with Mitered Raised Panel Doors Matte Finish

Wicker Glazed Maple Hardwood Cabinets with Mitered Raised Panel Doors-High Gloss

One Recliner, Fireplace, Televator & Reading Lights\*

Two Recliners with Lampstand & Reading Lights\*

Two Recliners with Reading Lights\*

87" Bunk Sofa\*

87" Bunk Sofa with End Table\*

Dinette with Roll Away Table, Two Fixed/Two Folding Chairs

Sleep Number R5 Radius Corner Air Mattress

Buffet Dinette with Free Standing Table

Buffet Dinette, Two Fixed/Two Folding Chairs on 4311

Combination Desk/Dinette with Roll Away Table, Two Fixed/Two Folding Chairs

Combination Desk with Buffet Table, Two Fixed/Two Folding Chairs

Combination Desk/Dinette with Free Standing Hidden Leaf Table, Two Fixed/Two Folding Chairs

Power Incline Head of Bed with Sleep Number R5 Air Mattress

Power Incline Retracting Bed Base with Sleep Number R5 Air Mattress

Queen Bed Layout

Flexsteel® Euro Booth Dinette with 1-6" Table Leaf

Euro Booth Dinette with Extra Leaves, Removable Table Leg, and Two Folding Chairs

Sofa/Euro Booth Dinette Ensemble with 6" Table Leaf

Sofa/Euro Booth Dinette Ensemble with Extra Leaves, Removable Table Leg & Two Folding Chairs

Powered Theater Seating & Reading Lights\*

Heated Driver/Passenger Seats

Undermount Double Bowl Solid Surface Kitchen Sink

Full Height Bed Base 4311

Bunk Beds to Convert to Wardrobe

**APPLIANCES**

Stainless Steel Convection Microwave with Three Burner Recessed Gas Cooktop

Air Horns

Whirlpool® 19.7 Refrigerator, 2000 Watt Pure Sine Inverter

Prep for Two-Piece Washer/Dryer

Flush Gas Cooktop Cover of Matching Countertop Material

Fireplace in Living Area\*

**OPTIONS**

Electrical Prep for Freezer ( 110 Volt & 12 Volt) without Tray

Whirlpool® Two-Piece Stacked Washer/Dryer

30" Convection Microwave in Kitchen Overhead on 4311

All Electric, Flush Mount Induction Cooktop, Whirlpool 19.7 Refrigerator, 2 Extra AGM Batteries, & 2800 Inverter

Dishwasher in Drawer with Stainless Steel Front

Central Vacuum Tool Kit

Dometic 2.8 Cf. Freezer on Pullout Tray in Exterior Compartment



**AUDIO, VIDEO & ACCESSORIES**

Sony® LED TV and Blu-ray Disc Player in Living and Bedroom Areas\* (TV Sizes Vary Per Floor Plan)

Sony® 49" 4K LED TV on Televator in Living Area\*

Dash Radio/CD Player with Harman/JBL 180 Watt Sound System and Subwoofer

Rearview Color Monitor System with Audio

Winegard Rayzar Automatic Digital TV Antenna

Satellite Dish Prep on Roof

Two Bedroom Radio Speakers

TV Jack and 110 Volt Recept in Door Side Exterior Storage Compartment

Bluetooth Microphone for Sony® Dash Radio

Bose® Solo 5 Soundbar Sound System

High Definition Component Wiring

Side-View Cameras Displayed onto Rearview Monitor Screen

Glass Dash Instrument Panel

10 Bc Fire Extinguisher, Smoke Detector, Propane and Carbon Monoxide Detector

**OPTIONS**

SiriusXM® Satellite Radio Capability (Does not include monthly subscription)

Sony® 43" 4K LED TV in Front Overhead

49" Televator with Fireplace in Place of Front Overhead TV on 4311

Exterior Entertainment Center in Sidewall with Sony® 43" 4K LED TV and Soundbar

Exterior Entertainment Center in Storage Compartment with Sony® 32" LED TV & Soundbar

Omni-Vue™ NS360 Camera System

Winegard Automatic Stationary Dome Satellite

Winegard In Motion Dome Satellite

Winegard Automatic Open Face SWM Satellite

Winegard Automatic Open Face Satellite

Winegard Cellular In Motion WiFi

Two-11" LCD Flip Down Monitor/DVD Player with Headphone\*

Dash Radio with Touchscreen Navigation System

Universal Remote Control

WiFiRanger SkyPro LTE Cellular Router

WiFiRanger Sky3 Pack Router

Xite Dash Radio, 6" Monitor with Rand McNally Navigation

Prep for Ground Tripod Satellite on Off Door Side with A/B Switch

**\*Check with dealership on floor plan availability.**

**The content in our literature depicts and describes products that are subject to change. For the most recent images and information, please visit [NewmarCorp.com](http://NewmarCorp.com).**

# THE NEWMAR CUSTOMER EXPERIENCE

*The Newmar difference goes beyond our industry-leading motor coaches to deliver you with an unrivaled ownership experience.*



## QUALITY FROM THE START

*Every Newmar is crafted one at a time by folks who have spent an average of eight years building them. And each coach we assemble must undergo more than 1,000 tests and checks before ever leaving our factory.*



## CAREFULLY SELECTED DEALERS

*We view our dealership network in terms of quality, not quantity. Each of our dealers acts as a partner in our shared mission to exceed your highest of expectations, for an ownership experience that's second to none from day one.*



## EVERYTHING IN ONE PLACE

*As a Newmar owner, you'll find resources specific to your coach through Newgle, an easy-to-use knowledge base that houses everything from user guides to technical support documents.*



## FRIENDS FOR LIFE

*Meet fellow owners through the **Newmar Kountry Klub**, a top social club for RV travelers that hosts rallies and other special events throughout the U.S. and Canada.*



## SEAMLESS SERVICE

*When you join the Newmar family, we pair you with a dedicated service specialist with expert knowledge of your exact coach. Available 24/7, our service specialists guarantee dealer warranty authorizations within four business hours and ship all in-stock parts the same day, free of charge.*



## ROCK-SOLID PROTECTION

*All models include a one-year/unlimited mileage limited warranty and a five-year, non-transferable structural warranty that covers your coach's superstructure in the event it fails to perform. **Ask your Newmar dealer for more details.***





## A. ROOF

---

*Fiberglass Roof*

*Batten Insulation*

*A/C Ducting*

*16" on Center Aluminum  
Rafter Framing*

*Kraft Paper Vapor Barrier*

*5/8" Bead Foam*

*3/16" Panel*

*Padded Vinyl Overlay*

## B. SIDEWALL

---

*Interior Wall Panel*

*5/8" Bead Foam*

*Kraft Paper Vapor Barrier*

*Batten Insulation*

*Composite One-Piece  
Gelcoat Exterior Sidewall*

*Aluminum Framing*

## C. FLOOR

---

*Tile*

*16" on Center Wood Framing*

*5/8" Floor Decking*

*Polyethylene Moisture Barrier*

*Batten Insulation*

## D. EXTERIOR

---

*13.5 M Penguin™ Heat Pump  
Central Air Conditioners*

*One-Piece Bonded Windshield*

*Coated Aluminum Wheels*

*Frameless, Double-Pane,  
Tinted Safety Glass Windows*

*Side-Hinged Baggage Doors with  
Optional Pull-Out Tray*

# OUR PARTNERS

*Newmar Quality Begins With The Company We Keep*

*You deserve class-leading performance from names you can trust. That's why we only work with suppliers dedicated to providing our customers with unrivaled quality, comfort, and support.*



## BASF

*The Coatings division of BASF is a global expert in the development and production of innovative and sustainable OEM and refinish coatings that deliver solutions beyond your imagination.*



## INDUSTRIAL FINISHES

*Industrial Finishes has supported RV manufacturers for over four decades. The Industrial Finishes paint process delivers uncompromising quality, providing your coach with a true "Masterpiece" finish.*



FLEXSTEEL®  
RECREATION

## FLEXSTEEL RECREATION

*Flexsteel Recreation offers innovative furniture designed for a life that rarely sits still. Comfortable and space-saving, Flexsteel furniture ensures your RV is always ready for dining, sleeping, or hosting guests.*



## SONY

*Beautifully designed Sony TVs and Blu-ray players combine to deliver an immersive picture and true-to-life sound. Revolutionize every aspect of your in-coach entertainment experience with Sony.*



Driven By You

## FREIGHTLINER CUSTOM CHASSIS

*Freightliner Custom Chassis are renowned for their exceptional ride, excellent maneuverability, advanced chassis technology, and nationwide 24/7 factory-direct support.*



## SPARTAN MOTORS

*Spartan Motors is an American company with over 30 years of experience designing and manufacturing the premier motorhome chassis, which provides superior performance, exceptional safety ratings, and industry-leading technology.*



## OUR PEOPLE MAKE *the* DIFFERENCE

*Newmar was founded in 1968 for one simple reason:  
to build a better RV.*

*Since then, we've focused our efforts and energy on creating  
residential-quality "homes on wheels," complete with  
handmade cabinetry and designer décors.*

*And every Newmar is handcrafted one at a time by men and  
women who have spent an average of eight years assembling  
them, resulting in superior-quality coaches that fully surpass  
their mass-produced competition.*

*Here, we don't just take the responsibility of designing,  
engineering, and constructing your motorhome seriously, we  
take it personally. Because in the end, our goal is not to win  
your trust, but earn it. Not once, but every single time you  
hit the road.*

*Join us, and discover the Newmar difference for yourself.*



WHEN YOU KNOW  
*the* DIFFERENCE



*Newmar Corporation | 355 N Delaware St | PO Box 30 | Nappanee, IN 46550-0030 | 574-773-7791 | Fax 574-773-2895*

*NewmarCorp.com*

**LAMESA REC  
VAN**

LaMesaRV.com  
800-496-8778